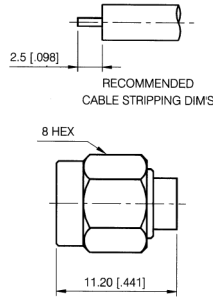
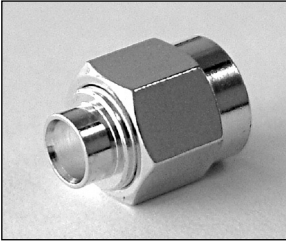


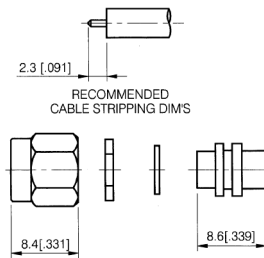
# SMA Series

## DIRECT SOLDER FOR SEMI-RIGID CABLE



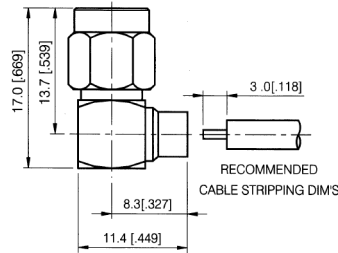
### STRAIGHT CABLE PLUG-WITH CONTACT

PART NUMBER	CABLE
705533-101SMA	.141 DIA. S/R
705522-601SMA	.086 DIA. S/R



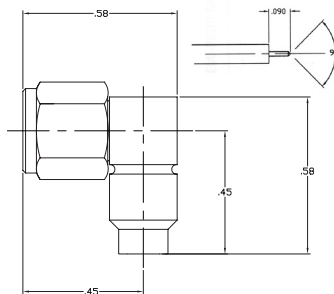
### STRAIGHT CABLE PLUG-WITHOUT CONTACT

PART NUMBER	CABLE
705527-101SMA	.141 DIA. S/R



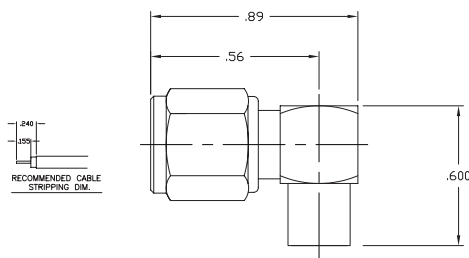
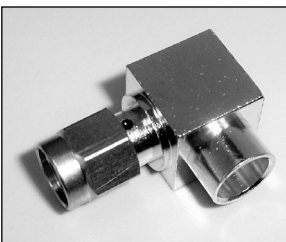
### RIGHT ANGLE CABLE PLUG

PART NUMBER	CABLE
705516-001SMA	.141 DIA. S/R
705523-001SMA	.086 DIA. S/R



### HIGH FREQUENCY (18GHz) RIGHT ANGLE CABLE PLUG

PART NUMBER	CABLE
705516-901SMA	.141 DIA S/R
705523-901SMA	.086 DIA S/R



### RIGHT ANGLE CABLE PLUG

PART NUMBER	CABLE
705101-001SMA	.250 DIA S/R