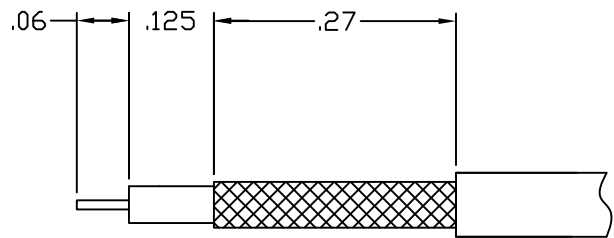
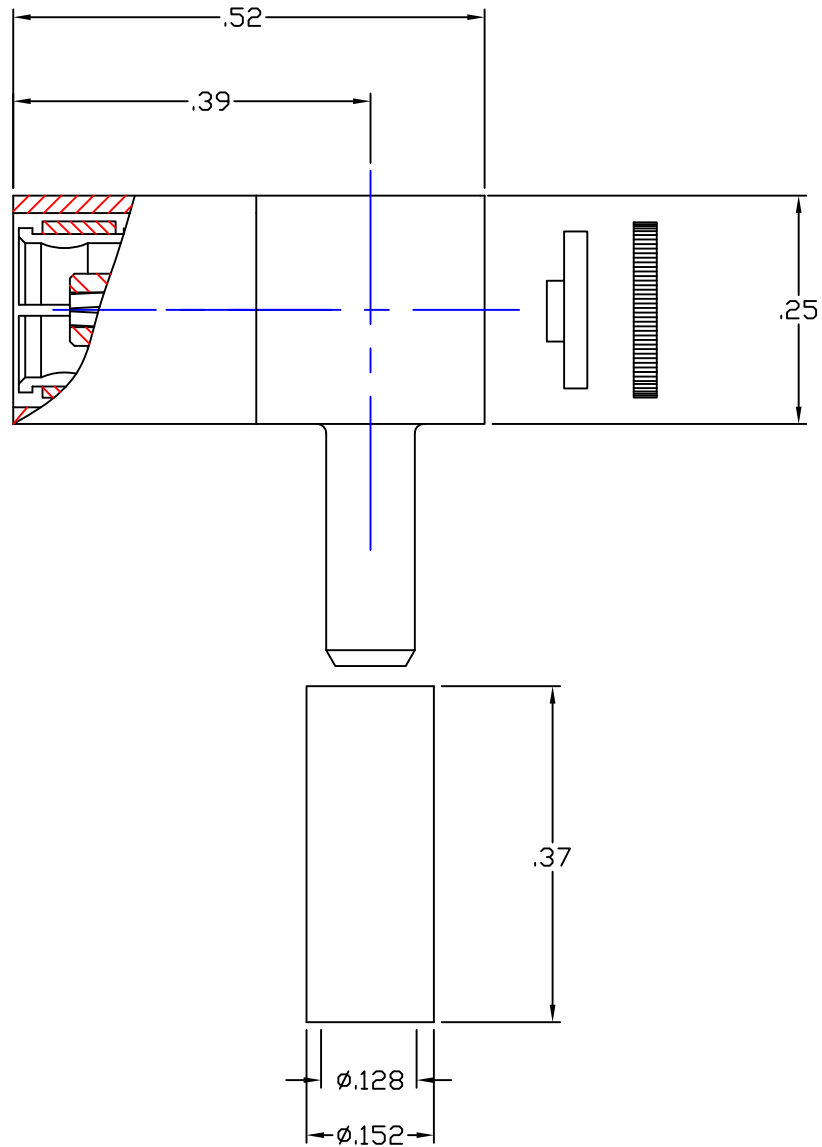


NOTES:  
 INTERFACE CONFORMS TO MIL-PRF-39012 SMB SNAP-ON  
 CONNECTOR SERIES

MATERIALS:  
 BODIES,SLEEVE CAP BRASS PER ASTM-B-16  
 CONTACT & SPRING BERYLLIUM COPPER PER ASTM-B-196  
 INSULATORS TEFLON PER ASTM-D-1710  
 CRIMP SLEEVE COPPER ALLOY 122 ANNEALED

FINISHES:  
 ALL METAL PARTS GOLD PLATE PER MIL-G-45204



RECOMMENDED CABLE STRIPING DIM.  
 RECOMMENDED CRIMPING DIE .128 HEX

ORDER AS 700425SMB

PROPRIETARY NOTICE

THIS DRAWING AND DESIGNS AND IDEAS EMBEDDED  
 IN THE DEVICE TO WHICH IT RELATES AND THE  
 METHOD OF PRODUCING THE DEVICE SHALL NOT BE  
 EMPLOYED COPIED OR DISCLOSED TO ANYONE IN ANY  
 MANNER WITHOUT THE WRITTEN CONSENT OF AN  
 EZ FORM COMPANY OFFICIAL

APPD DATE	BY	DATE
DESCRIPTION		
REV.		

UNLESS OTHERWISE SPECIFIED:

DIMENSIONS ARE IN INCHES:		SCALE	
TOLERANCES:			
DECIMALS:	FRACTIONS: $\pm 1/64$		
2-PLACE $\pm .010$	ANGLES: $\pm 3^\circ$		
3-PLACE $\pm .005$			
MATERIAL: _____			
FINISH: _____			
DRAWN	DATE	CHECKED	DATE
P.J.P.	9-25-03	J.A.B.	9-25-03
APPROVED	DATE	SHEET 1	OF 1
A.T.	9-25-03		

**EZ FORM**  
 CABLE CORPORATION  
 HAMDEN, CT 06517

TITLE			
RIGHT ANGLE SMB SNAP-ON CONNECTOR FOR RG 316 FLEXIBLE CABLE			
A	CODE IDENT.		REV.
	9W826	CD-700425-001	