

**RoHS
COMPLIANT**

NOTES:

INTERFACE AND ENVIRONMENTAL REQUIREMENTS CONFORM TO CECC 22 220 & IEC 60169-36

ELECTRICAL SPECIFICATIONS:

FREQUENCY RANGE (GHz): DC TO 6 GHz
 RETURN LOSS (MAX.): > 21 dB
 INSERTION LOSS (dB MAX.): < 0.05 X vf(GHz) dB
 NOMINAL IMPEDANCE: 50 OHMS
 VOLTAGE RATING (MAX. VRMS): 335
 INSULATION RESISTANCE: > 1 GΩ
 CONTACT RESISTANCE, CENTER CONTACT (MAX. MILLIOHMS): 5.0
 CONTACT RESISTANCE, OUTER CONTACT (MAX. MILLIOHMS): 2.5

MECHANICAL & ENVIRONMENTAL SPECIFICATIONS:

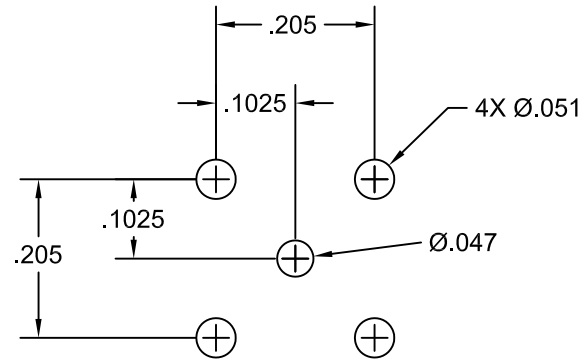
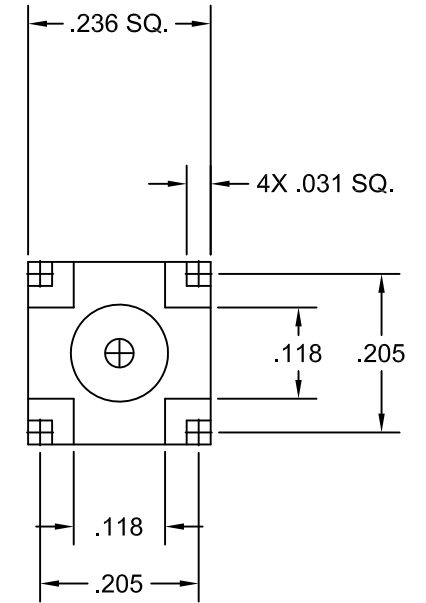
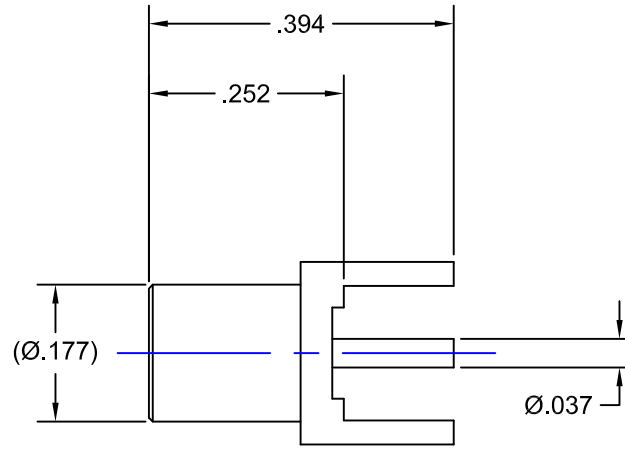
TEMPERATURE RATING (DEGREES CELCIUS): -55°C TO +155°C
 DURABILITY: 500 MATINGS
 ENGAGEMENT FORCE: ≤ 5.62 lb.
 DISENGAGEMENT FORCE: 1.8 MIN. TO 4.5 lbs. MAX.

MATERIALS:

BODY: BRASS PER ASTM-B-16
 INSULATOR: TEFLON PER ASTM-D-1710
 CONTACT: BERYLLIUM COPPER PER ASTM-B-196

FINISHES:

BODY: GOLD PLATE PER MIL-G-45204
 CONTACT: GOLD PLATE PER MIL-G-45204



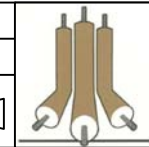
**RECOMMENDED MOUNTING
HOLE PATTERN**

PROPRIETARY NOTICE
THIS DRAWING AND DESIGNS AND IDEAS EMBEDDED IN THE DEVICE TO WHICH IT RELATES AND THE METHOD OF PRODUCING THE DEVICE SHALL NOT BE EMPLOYED COPIED OR DISCLOSED TO ANYONE IN ANY MANNER WITHOUT THE WRITTEN CONSENT OF AN EZ FORM COMPANY OFFICIAL

APPD.	EW	
DATE	5/15/13	
BY	EW	
DATE	5/15/13	
DESCRIPTION	INITIAL RELEASE	
REV.	-	

CABLE TERMINATION INFO/TOOLS
ASSEMBLY INSTRUCTION SHEET: N/A
SOLDERING BASE: N/A
SOLDERING MATE: N/A
CONTACT SPACER: N/A
CRIMP DIE SIZE: N/A
OTHER: N/A

UNLESS OTHERWISE SPECIFIED:			
DIMENSIONS ARE IN INCHES:		SCALE NONE	
TOLERANCES:			
DECIMALS: 2-PLACE ±.030	FRACTIONS: ± 1/64		
3-PLACE ±.015	ANGLES: ± 3°		
MATERIAL: SEE NOTES			
FINISH: SEE NOTES			
DRAWN EW	DATE 5/15/13	CHECKED AT	DATE 5/15/13
APPROVED JAB	DATE 5/15/13	SHEET 1 OF 1	



EZ Form Cable Corporation			
285 Welton Street Hamden, CT 06517			
MCX JACK PC MOUNT			
TITLE	CODE IDENT.		REV.
A	9W826	701964-100MCX	-