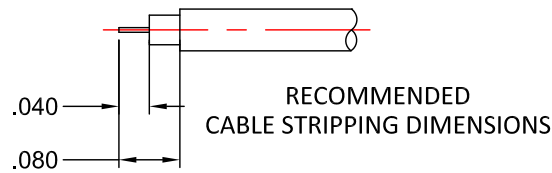


RoHS
COMPLIANT



NOTES:

INTERFACE CONFORMS TO
CECC 22000 MMCX INTERFACE SPECIFICATION

ELECTRICAL:

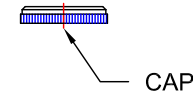
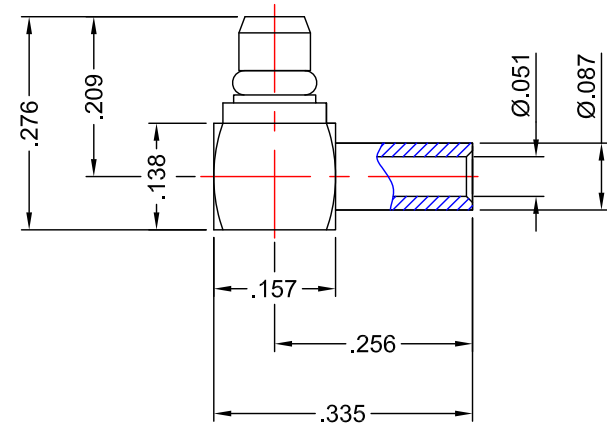
NOMINAL IMPEDANCE: 50Ω
FREQUENCY RANGE: DC TO 0-6 GHz

MATERIALS:

INSULATOR: TEFLON PER ASTM-D-1710
CONTACT & RETAINING RING: BERYLLIUM COPPER PER ASTM-B-196
BODY: 360 ALLOY BRASS 1/2 HARD PER ASTM-B-16

FINISHES:

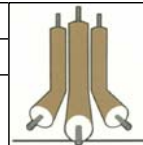
CONTACT & RETAINING RING: GOLD PLATE PER MIL-DTL-45204
BODY: GOLD PLATE PER MIL-DTL-45204



PROPRIETARY NOTICE
THIS DRAWING AND DESIGNS AND IDEAS EMBEDDED
IN THE DEVICE TO WHICH IT RELATES AND THE
METHOD OF PRODUCING THE DEVICE SHALL NOT BE
EMPLOYED COPIED OR DISCLOSED TO ANYONE IN ANY
MANNER WITHOUT THE WRITTEN CONSENT OF AN
EZ FORM COMPANY OFFICIAL

APPD.	T.D.	
DATE	03/21/17	
BY	J.N.	
DATE	03/21/17	
DESCRIPTION	INITIAL RELEASE	
REV.	-	

UNLESS OTHERWISE SPECIFIED:			
DIMENSIONS ARE IN INCHES:		SCALE	
TOLERANCES: NONE		4:1	
MATERIAL:		SEE NOTES	
FINISH:		SEE NOTES	
DRAWN	DATE	CHECKED	DATE
J.N.	03/21/17	T.D.	03/21/17
APPROVED	DATE	SHEET 1 OF 1	
A.T.	03/21/17		



**EZ Form Cable
Corporation**
285 Welton Street
Hamden, CT 06517
WWW.ezform.com

TITLE			
MMCX R/A PLUG FOR .047" S/R CABLE			
A	CODE IDENT.	704004-047	REV.
	9W826	MMCX	-